

BLUES

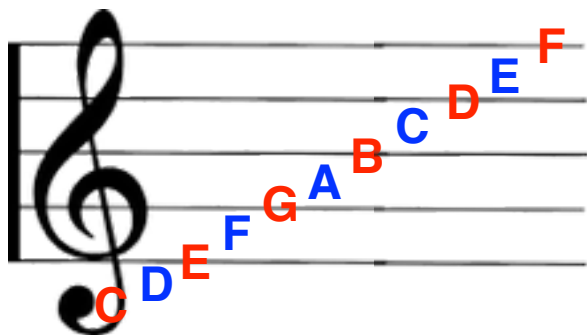
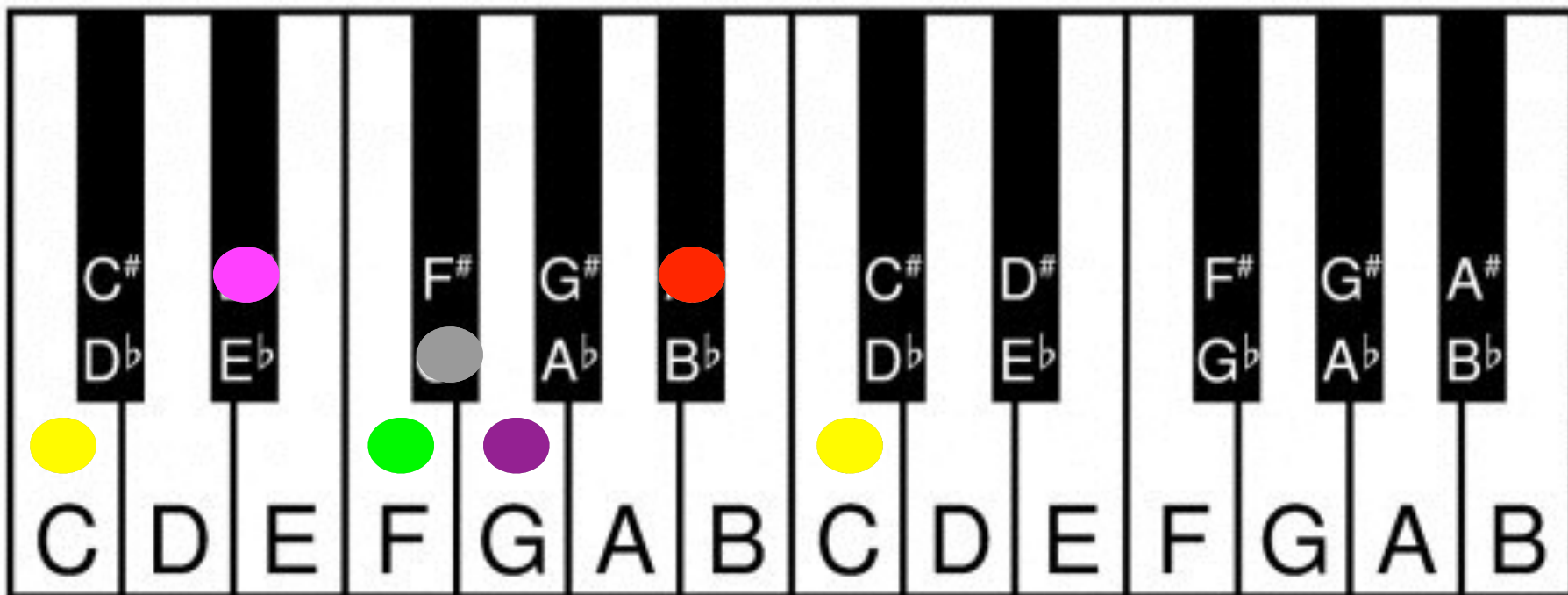
IMPROVISATION- THE BLUES SCALE IN C

SCHOOL21 - MUSIC

YEAR 8

THE BLUES SCALE IN C

1. Work your way up (right) the scale starting on C. Can you go the opposite way back down (left)?
2. Create a short, repetitive melody using two notes- C Eb
3. When you are confident add one-three more notes to your repetitive melody- C Eb F G Bb
4. Create repetitive ideas using all the notes from the blues scale C Eb F F# G Bb C



b= flat #= sharp